

Test 5

You have 30 minutes to complete this test.

You have 30 questions to complete within the given time.

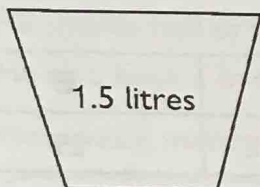


Circle the letter above or alongside the correct answer.

① $486 \div 9 =$

A	B	C	D	E
51	52	53	54	55

② Look at these containers.



Container A



Container B



Container C

How many times greater is the capacity of Container A than the capacity of Container C?

A	B	C	D	E
1	2	3	4	5

③ Robert has a collection of 336 stamps.

$\frac{1}{3}$ of these stamps are blue.

How many of Robert's stamps are **not** blue?

A	B	C	D	E
112 stamps	88 stamps	336 stamps	168 stamps	224 stamps

④ The cost of a chair is £25.50

Fiona wants to buy 4 chairs.

She currently has £18.00

How much more money does Fiona need to buy the chairs?

A	B	C	D	E
£102.00	£25.50	£7.50	£84.00	£120.00

- 5 Which of these numbers is closest to 0.6?

A	B	C	D	E
0.65	0.58	0.585	0.601	0.61001

- 6 Put these numbers in order, from largest to smallest.

0.175 0.715 0.158 0.164

A	0.715 0.175 0.164 0.158
B	0.158 0.715 0.164 0.175
C	0.158 0.164 0.175 0.715
D	0.715 0.164 0.158 0.175
E	0.715 0.175 0.158 0.164

- 7 3 lemons cost £1.56

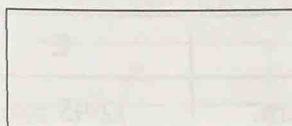
What is the cost of 7 lemons?

A	B	C	D	E
£0.52	£3.12	£3.64	£3.02	£3.44

- 8 What is 120% of 35?

A	B	C	D	E
36	7	45	70	42

- 9 The length of this rectangle is twice its width.



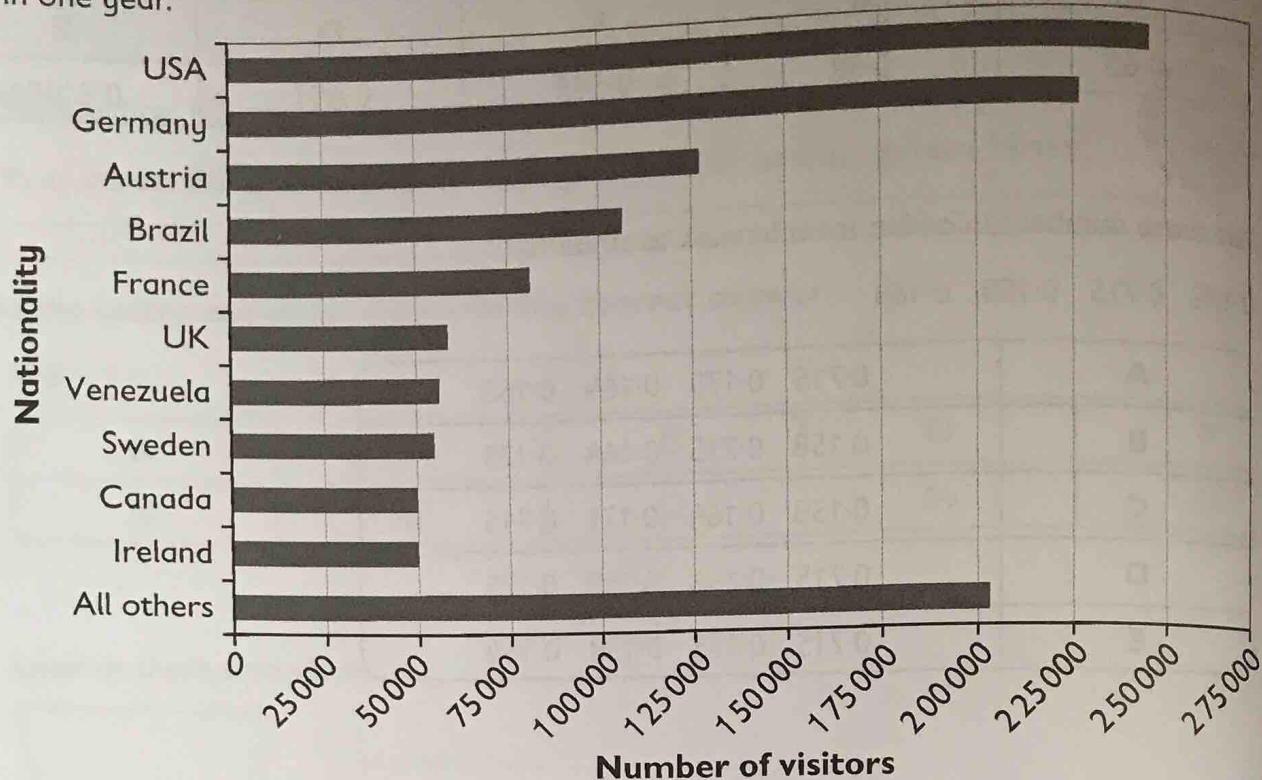
7.5 cm

What is the perimeter of the rectangle?

A	B	C	D	E
7.5 cm	15 cm	30 cm	37.5 cm	45 cm

Questions continue on the next page

- 10 This bar chart shows how many people of different nationalities visited a certain theme park in one year.



Which of the following statements is **false**?

A	There were more visitors from France than from the UK.
B	The largest number of visitors came from the USA.
C	There were more visitors from Venezuela than from Ireland.
D	There were fewer visitors from Brazil than from Sweden.
E	Visitors from Austria outnumbered those from Canada.

- 11 Eva spent $1\frac{3}{4}$ hours reading.

She finished reading at 2:21 p.m.

At what time did Eva begin reading?

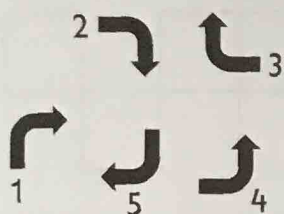
A	B	C	D	E
12:30 p.m.	1:21 p.m.	4:06 p.m.	12:36 p.m.	12:45 p.m.

- 12 $\frac{4}{5}$ of A has the same value as $\frac{2}{3}$ of B .

If $B = 60$, what is the value of A ?

A	B	C	D	E
48	40	55	50	20

- 13 Which of the moves described in the table is **not** a rotation?



A	B	C	D	E
5 → 2	1 → 5	3 → 5	4 → 2	1 → 3

- 14 The diameter of a circle is 15.5 cm.

What is the radius of the circle?

A	B	C	D	E
31 cm	7.5 cm	7 cm	32 cm	7.75 cm

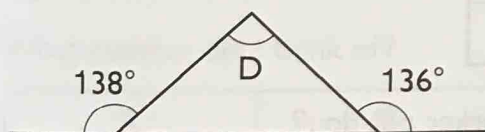
- 15 Winny's monthly rent is £550

She also spends £225 per month on gas and electricity.

How much does Winny spend per year on rent, gas and electricity?

A	B	C	D	E
£6600	£9300	£775	£2700	£11 000

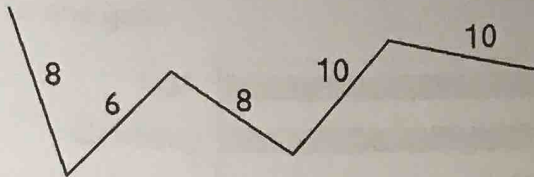
- 16 This diagram shows a scalene triangle and a straight line.



What is the size of angle D?

A	B	C	D	E
94°	44°	86°	55°	42°

- 17 This diagram shows the distance in kilometres driven by Fred along a track.



It took Fred 45 minutes to drive the full distance.

What was Fred's average speed in kilometres per hour?

A	B	C	D	E
56 kph	42 kph	60 kph	45 kph	25 kph

- 18 A skip full of rubbish weighs 420 kg.
When empty, the skip weighs 102.5 kg.

What is the weight of the rubbish?

A	B	C	D	E
315 kg	322.5 kg	317.5 kg	522.5 kg	319 kg

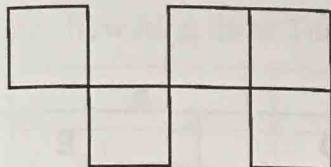
- 19 The table shows the total number of grapes picked by different workers over 5 days.

Worker's name	Number of grapes
Bob	1348
Dev	2311
Diana	3213
Cali	2568

What was the mean number of grapes picked per worker per day?

A	B	C	D	E
2360 grapes	1888 grapes	9440 grapes	3482 grapes	472 grapes

- 20 The shape below is formed from identical squares, each with a side length of 5 cm.



What is the perimeter of the shape?

A	B	C	D	E
100 cm	80 cm	125 cm	65 cm	75 cm

- 21 $2s + 4b = 81$

If $s = 0.5$, what is the value of b ?

A	B	C	D	E
0.5	20	21	20.5	1

- 22 A cuboid has a width of 5 cm, a height of 10 cm and a volume of 250 cm^3 .

What is the length of the cuboid?

A	B	C	D	E
50 cm	5 cm	10 cm	25 cm	250 cm

- 23 I think of a number, divide it by 2, add 8 and then subtract 17

My answer is 10.5

What number did I think of?

A	B	C	D	E
27.5	9.75	18	19.5	39

- 24 The height of a triangle is three times its base.

If the base of the triangle is 5 cm, what is the area of the triangle?

A	B	C	D	E
75 cm^2	37.5 cm^2	5 cm^2	25 cm^2	15 cm^2

Questions continue on the next page

- (25) Imran buys 2 watermelons for £4.65 each and an orange for 55 pence.
He pays with a £10 note.

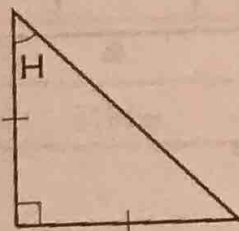
How much change does Imran receive?

A	B	C	D	E
£0.15	£4.80	£5.20	£9.20	£9.85

(26) $0.0282 + 2.7301 =$

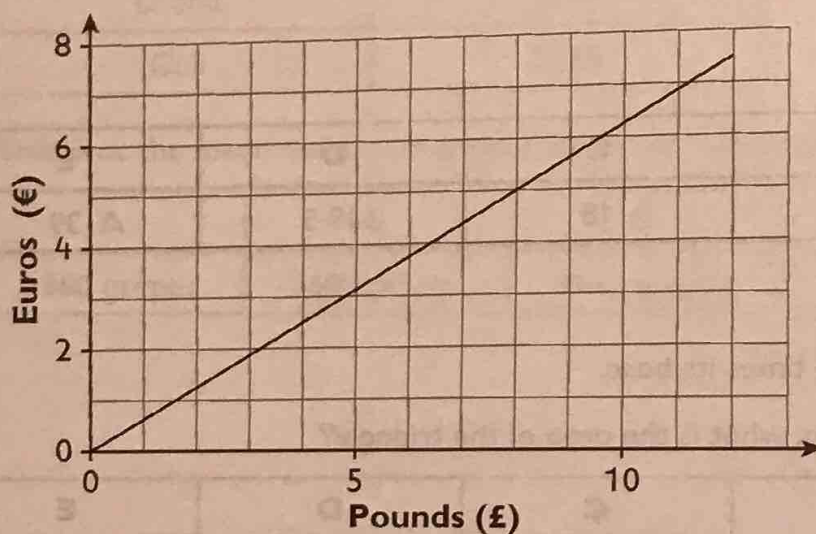
A	B	C	D	E
2.7538	2.7385	2.7358	2.7583	2.3758

- (27) What is the size of Angle H?



A	B	C	D	E
180°	67.5°	45°	90°	135°

- (28) This graph shows the conversion rate between pounds (£) and euros (€).



How many euros (€) is £16?

A	B	C	D	E
€16	€5	€8	€10	€22

- 29 Timothy begins work at 8:47 a.m. and ends work at 4:17 p.m.

For how long does Timothy work?

A	B	C	D	E
$7\frac{1}{2}$ hours	$6\frac{1}{2}$ hours	$7\frac{2}{3}$ hours	$8\frac{1}{4}$ hours	$6\frac{3}{4}$ hours

- 30 The test scores of the students in Class A are shown below:

87 34 54 34 98 54 34 87 14 37 66 22

What is the difference between the highest score and the lowest score?

A	B	C	D	E
73	84	64	76	58